


RIIMPO324F Conduct Civil Construction Grader Operations



RIIMPO324F Conduct Civil Construction Grader Operations

[START COURSE](#) [DETAILS](#) ▾

Overview

This online workbook is pre-course material only - you are still required to attend a practical session and successfully complete a practical assessment before you will be awarded a nationally recognised statement of attainment. Take your time and read each section carefully, it might help for you to take notes.

Make sure you answer all of the checkpoint review questions along the way. The results of this will be sent to your trainer as part of your course assessment.

What you will learn

This course is designed to help you understand all of the elements required to Conduct Civil Construction Grader Operations.

SECTION 4

4.1 INTRODUCTION



Lesson 1 of 96

1.1. Introduction

This course is based on the unit of competency **RIIMPO324F Conduct Civil Construction Grader Operations**.

You will learn about:

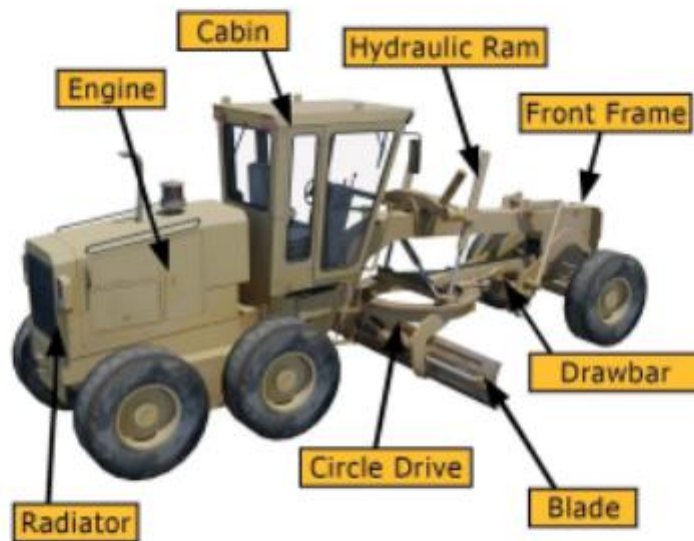
- Planning and preparing for grading activities.
- Conducting pre-operational checks.
- Selecting, removing and fitting attachments.
- Operating the grader.
- Relocating the grader.
- Carrying out machine operator maintenance.
- Site clean-up.



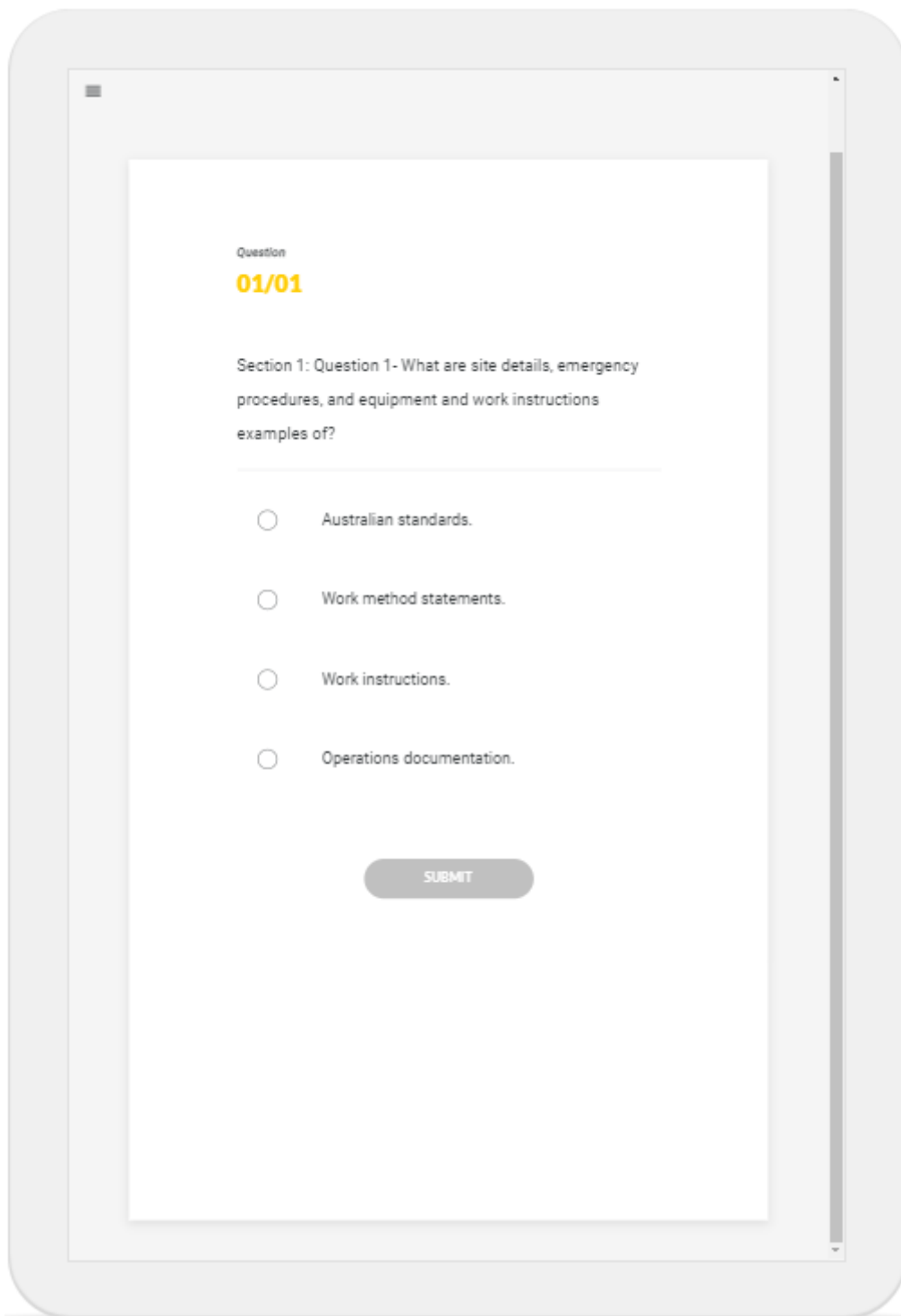


Lesson 3 of 06

1.1.2 Common Grader Components



Engine	+
Radiator	+
Cabin	+
Blade	+



Question

04/08

Section 1: Question 5 - Select three (3) details that are outlined in project quality requirements.

- Project tolerances.
- Hazard controls.
- Estimated completion timeframes.
- Project costings.
- Project dimensions.
- Standards of work.

SUBMIT